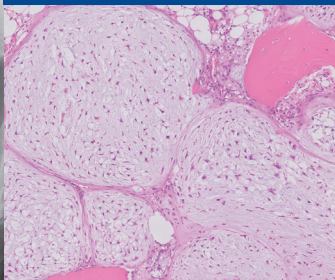
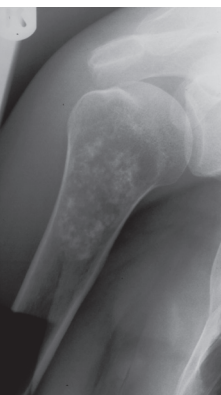




COURSE

# A multidisciplinary approach to the diagnosis of bone tumours

MONDAY 25 – WEDNESDAY 27 MARCH 2019



**ACCREDITATION** will be applied for at the professional societies

## TARGET GROUPS

The course is meant for (trainee) pathologists, radiologists, orthopaedic surgeons, clinical oncologists and paediatricians.

## REGISTRATION FEE

€ 700,- / € 395,-

## VENUE

Leiden University Medical Center,  
Albinusdreef 2, 2333 ZA Leiden

- *Multidisciplinary approach to diagnose tumours*
- *Lectures and practical training*
- *Discussion in multidisciplinary setting*

## EDUCATIONAL OBJECTIVES

- To practice with and experience the benefit of a multidisciplinary approach to bone lesions
- To increase knowledge of the diagnostic criteria of a variety of primary bone tumours and tumour-like lesions.
- To understand the genetic background and the role of molecular diagnostics in the diagnosis of bone tumours.

For more information and registration:  
[www.boerhaavenascholing.nl](http://www.boerhaavenascholing.nl)

# A multidisciplinary approach to the diagnosis of bone tumours

MONDAY 25 – WEDNESDAY 27 MARCH 2019

This course aims at the practical multidisciplinary approach to diagnose tumours of bones and joints, which can also be encountered outside specialized centers.

The course deals with a systematic approach of groups of frequently occurring tumours and tumour-like lesions.

The emphasis is multidisciplinary and the focus on the interaction between pathologists,

radiologists and orthopaedic surgeons, which is crucial to come to an adequate diagnosis.

Lectures are admixed with practical training in the form of computerized microscopy training, and discussion of relevant molecular biological techniques, in a multidisciplinary setting.

## ORGANIZING COMMITTEE

prof.dr. J.V.M.G. Bovée and Dr. C.S.P. van Rijswijk

## PROGRAMME

### Day 1 Monday 25 March 2019, 11:30-17:30

- Radiologic approach of skeletal tumours
- Preparation of biopsy and resection material
- Establishing a diagnosis: the surgical point of view
- Differential diagnosis of bone forming tumours
- Hereditary osteogenic tumours
- Practical session bone forming tumours (radiology and histology)

### Day 2 Tuesday 26 March 2019, 09:00-17:15

- Differential diagnosis of giant cell containing tumours
- Practical session giant cell containing tumours (radiology and histology)

- Differential diagnosis of cartilage forming tumours including syndromes
- Practical session cartilage forming tumours (radiology and histology)
- Treatment of bone tumours; the surgical point of view

### Day 3 Wednesday 27 March 2019, 09:00-12:30

- Differential diagnosis of small blue round cell tumours
- Contribution of molecular diagnostics
- Differential diagnosis of inflammation and inflammation-like conditions
- Practical session (radiology and histology)

For more information and registration:  
[www.boerhaavenascholing.nl](http://www.boerhaavenascholing.nl)